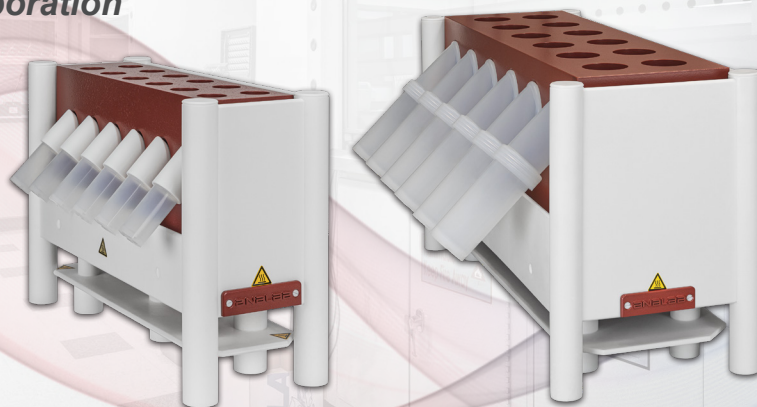


ANALAB[®] EvapoClean

Closed System Sample Evaporation



Better Sample Preparation = Better Results

The Analab EvapoClean systems are designed to safely evaporate and concentrate samples in aqueous acids and organic solvents for trace metal analysis. They provide a closed sample evaporation environment that protects important samples from external contamination.

- Provides partial or complete evaporation with constant and uniform heating
- Available in 25 and 125 mL vessel sizes
- All systems feature CleanClever wells for sample digestion and vessel cleaning

Features & Capabilities

- PFA-coated graphite heating block for maximum resistance to aggressive chemicals
- Digitally controlled temperature regulation and optional remote probe
- Safe and simple setup - just two connections minimizes setup and contamination
- Suitable for Class 1 (ISO 3) clean room environments – creates no contaminants/particles
- Digital temperature controller located remotely to eliminate corrosion

Safety

- PTFE thermal protection around all sides to protect users
- Evaporated solvent is recondensed – not released into lab environment
- Programmable timer for unattended shutdown

EvapoClean Features Diagram

PTFE Elbow

- Connects PFA Sample and Solvent bottles to provide closed environment

Semi-Permeable Membrane

- Optional vent releases pressure while preventing external contamination for higher temperatures and volatile solvents

CleanClever Wells

- Heated wells for digesting samples & cleaning bottles with acid vapor

PFA Bottles

- Sample and Solvent bottles are inert to corrosion & reduce contamination

Purification Ports

- Support multiple vessel kits for simultaneous concentration or evaporation

External Control

- 1.7 m (5.5') PTFE-shielded control cable
- Regulator located remote from CleanAcids module

Graphite Heating Block

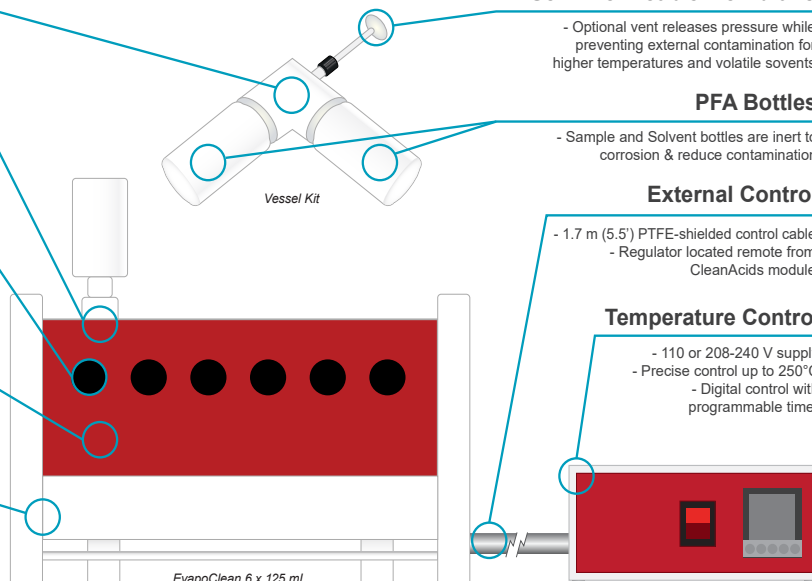
- PFA-coated graphite assembly inert to acid corrosion & uniformly heats vessel

Temperature Control

- 110 or 208-240 V supply
- Precise control up to 250°C
- Digital control with programmable timer

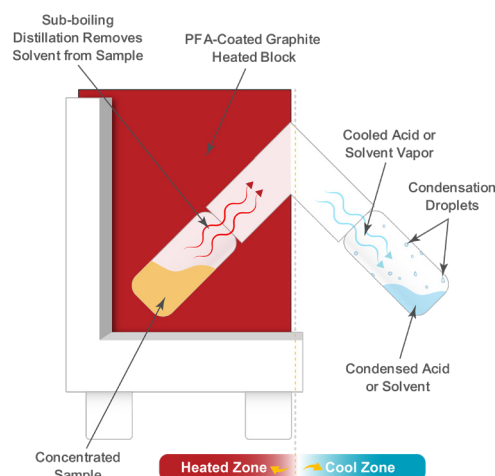
Thermal Protection

- PTFE outer shell protects user from heated block



How it Works

- Sample is placed in PFA sample bottle & assembled vessel kit is inserted into the Purification Port
- High purity vapors are produced by heating sample to slightly below the boiling point of the acid / solvent
- Heated vapors leave heated zone and condense on the cool walls of solvent bottle
- Analytes remain in sample bottle, concentrating while the acid or solvent is collected in solvent bottle
- Regulator with timer provides unattended operation



Models

EvapoClean systems support either 125 or 25 mL sample vessels, and three models (3, 6, & 12 samples) are available for each vessel size. Systems include complete vessel kits with standard elbows, and are configured with CleanClever wells on the top surface of the thermal block, which can be used for sample digestion or vessel cleaning.



EvapoClean Model	3x25 mL	6x25 mL	12x25 mL	3x125 mL	6x125 mL	12x125 mL
Part Number (110-120V / Amps)	EV-3.25-1V-15A	EV-6.25-1V-15A	EV-12.25-1V-15A	EV-3.125-1V-15A	-	-
Part Number (208-240V / Amps)	EV-3.25-2V-15A	EV-6.25-2V-15A	EV-12.25-2V-15A	EV-3.125-2V-15A	EV-6.125-2V-20A	EV-12.125-2V-20A
Dimensions (L x W x H, in cm)	28 x 16 x 31	44 x 16 x 31	44 x 26 x 31	36 x 24 x 35	64 x 41 x 35	64 x 41 x 35
Weight (kg)	12	18	33	19	54	111
CleanClever wells (diameter x depth, cm)	6 @ 3 x 5	12 @ 3 x 5	24 @ 3 x 5	3 @ 5 x 4.5 3 @ 5 x 10.4	6 @ 5 x 4.5 6 @ 5 x 10.4	24 @ 5 x 4.5

Regulators

Each EvapoClean system is controlled by a temperature regulator, which is designed for remote placement to eliminate corrosion of the electronic components. Single-setpoint regulators provide timed operation with an internal heating block sensor, while Dual Controller regulators add the capability to also measure and control heating from inside the vessel via a remote temperature probe. Programmable multi-step regulators are also available.

Regulator	Timer	Block Sensor Control	Vessel Probe Control	Electrical Requirement
RNP-1V-15A-T	✓	✓		100-120V / 15A
RNP-2V-15A-T	✓	✓		208-240V / 15A
RNP-2V-20A-T	✓	✓		208-240V / 20A
RNP-DUAL-1V-15A	✓	✓	✓	100-120V / 15A
RNP-DUAL-2V-15A	✓	✓	✓	208-240V / 15A
RNP-DUAL-2V-20A	✓	✓	✓	208-240V / 20A



Single-Setpoint Regulator



Single-Setpoint Dual Controller Regulator

EvapoClean Accessories

EvapoClean vessel kits consist of two PFA bottles (Sample and Solvent) and a PTFE Elbow. Alternate vessel kits can be added to provide venting and direct temperature measurement from within the sample vessel. Vented elbows are recommended if 1.) the operating temperature is within 10°C of the liquid boiling point or 2.) when using volatile organic solvents. Stands for the vessel kits are available to store them when not in use.

Description	Contents	Part Number	Accessory Image
PFA Vessel Kit, 25 mL, no vent	2 x 25 mL PFA bottles & closures + elbow	VK-25mL	
PFA Vessel Kit, 125 mL, no vent	2 x 125 mL PFA bottles & closures + elbow	VK-125mL	
PFA Vessel Kit, 25 mL, with vent	2 x 25 mL PFA bottles & closures + elbow, vent, filter	VK-25mL-WV	
PFA Vessel Kit, 125 mL, with vent	2 x 125 mL PFA bottles & closures + elbow, vent, filter	VK-125mL-WV	
Dual Port Elbow & Probe Kit, for 25 mL	PTFE dual port elbow, vent, filter, & temperature probe for 25 mL	EP-25mL-WV	
Dual Port Elbow & Probe Kit, for 125 mL	PTFE dual port elbow, vent, filter, & temperature probe for 125 mL	EP-125mL-WV	
Elbow Stand, six position for 25 mL Vessel Kits	PVC stand for 6 x 25 mL EvapoClean Vessel Kits	ES-6.25	
Elbow Stand, six position for 125 mL Vessel Kits	PVC stand for 6 x 125 mL EvapoClean Vessel Kits	ES-6.125	
Temp Probe for 25 & 125 mL Vessels	Remote probe (150 mm), use with Dual Controller for 25 & 125 mL CleanAcids vessels	S-INSITU-150E	

Analab – Your Source for High Purity Sample Preparation



FluoroPlate



EasyTrace CRD



FluoroBloc



CleanClever



EvapoClean



P'Tips Cleaner



CleanAcids