

## apex Shelves for PE Elan

Greater work area for sample introduction systems

Increase the work area and make the use of sample introduction systems more convenient with these add-on shelves for PerkinElmer Elan ICPMS. Ideal for use with the Apex inlet system.

- Positions the Apex system to align with ICP torch
- Attaches to the Elan using manufacturer's contact points
- Quick and easy to install
- Provides sturdy work area capable of supporting heavy loads
- Constructed from chemically resistant polypropylene

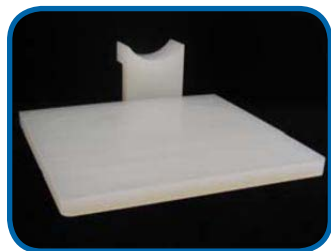


Apex Shelf for PerkinElmer Elan with cassette mount torch



**ES-2999-5421**  
Shelf for PE Elan with  
cassette torch (newer  
than mid-2005)

**ES-2999-5431**  
Shelf for PE Elan with  
bayonet torch (built be-  
fore mid-2005)

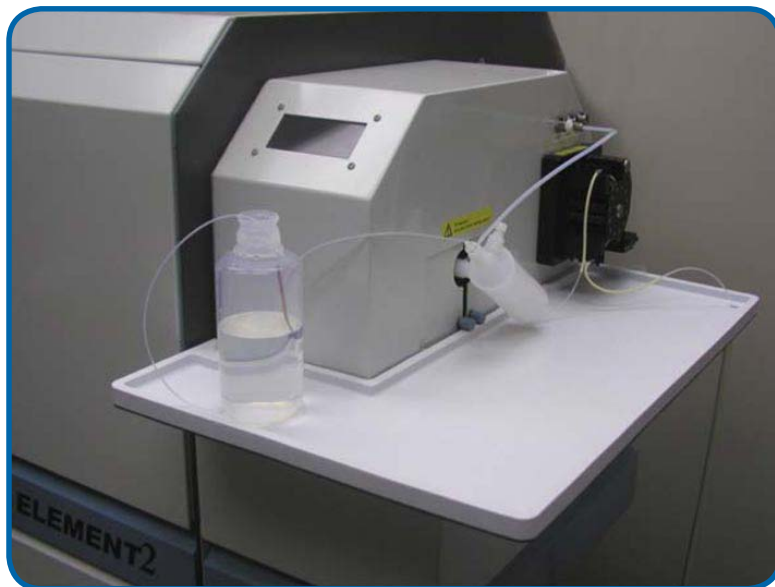


Greater work area makes using the Apex or other sample introduction systems more convenient.

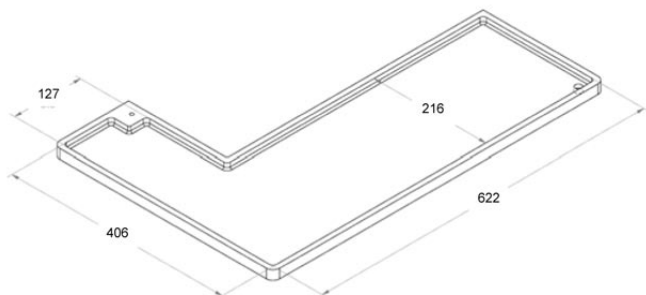
## E2-3 Sample Tray for the Thermo Scientific ELEMENT 2 ICPMS

Increase the work area and make the use of sample introduction systems more convenient.

- Increases sample inlet work area by nearly 3x
- Constructed from chemically resistant polypropylene
- Quick and easy to install
- Directly and easily replaces standard ELEMENT 2 trays
- Integrated drain port to channel waste directly to waste container
- Convenient for use with the Apex system



**ES-2999-5220** E2-3 Sample Tray for the Thermo Scientific ELEMENT 2.



Greater work area makes using the Apex or other sample introduction systems more convenient.