

TuneSelect

for Agilent



Automatic daily startup, hardware and auto-tuning without an operator

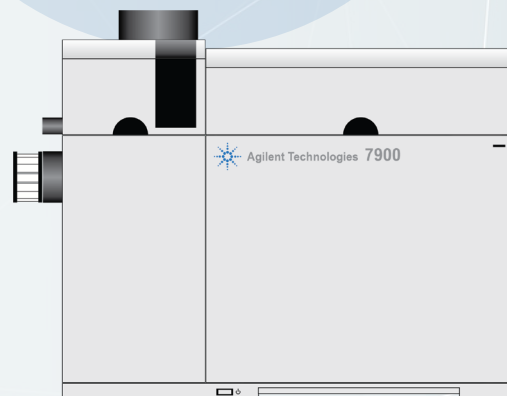
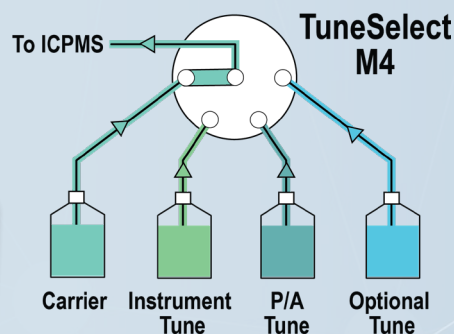
The TuneSelect system allows for inline introduction of tune solutions from up to 4 dedicated bottles for automated tuning and optimization of the Agilent 7800/7900/8900 ICPMS.

Up to 4 different solutions can be selected. For example: peristaltic pump carrier solution, tune solution, P/A tune solution and spray chamber rinse solution.

When a hardware, startup or auto-tune is initiated, the TuneSelect will automatically introduce the selected tune solution as selected within the software, allow for prescribed uptake time and even allow for manual tuning within the ESI plugin dropdown menu.

TuneSelect Automatically Introduces:

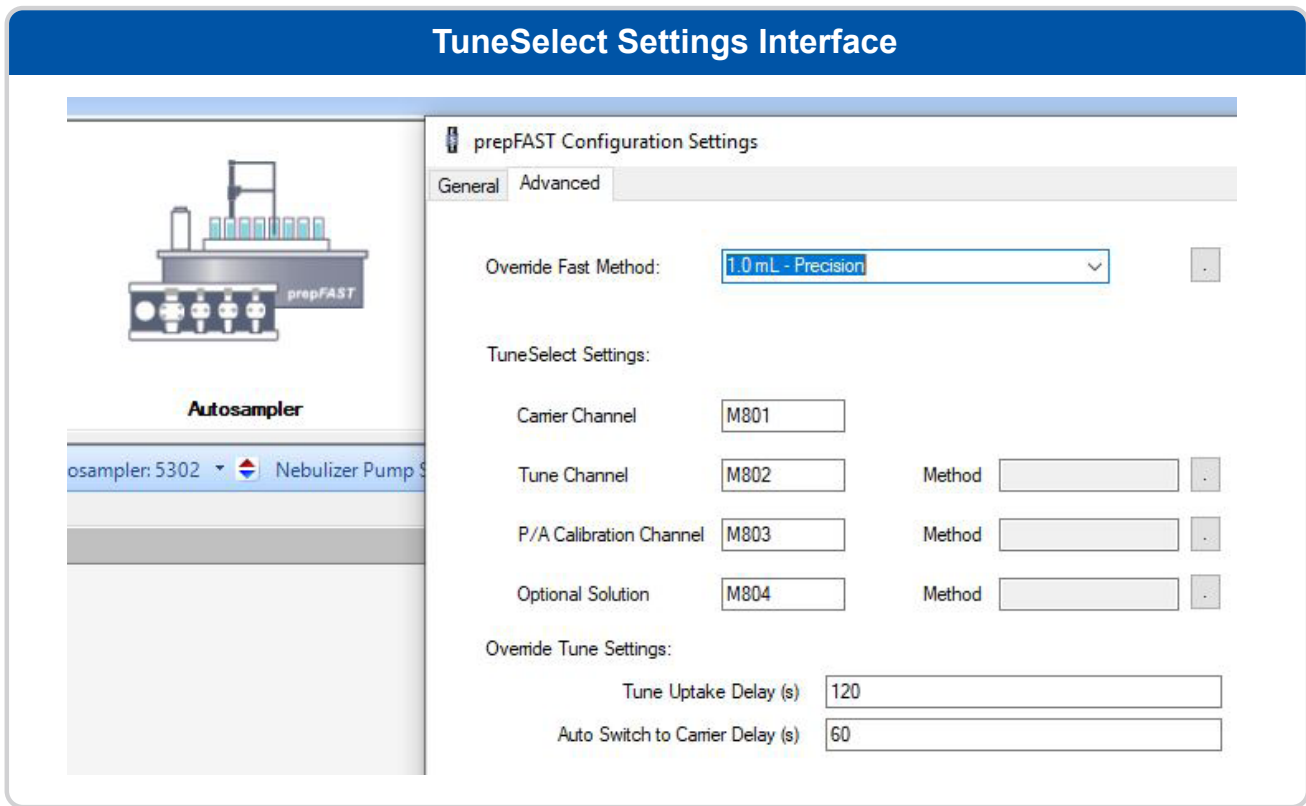
- Daily tuning solution
- Dual detector calibration solution
- Rinse or additional tune solution
- Carrier solution



**TuneSelect
Requires an SC
DX Autosampler
for Operation**

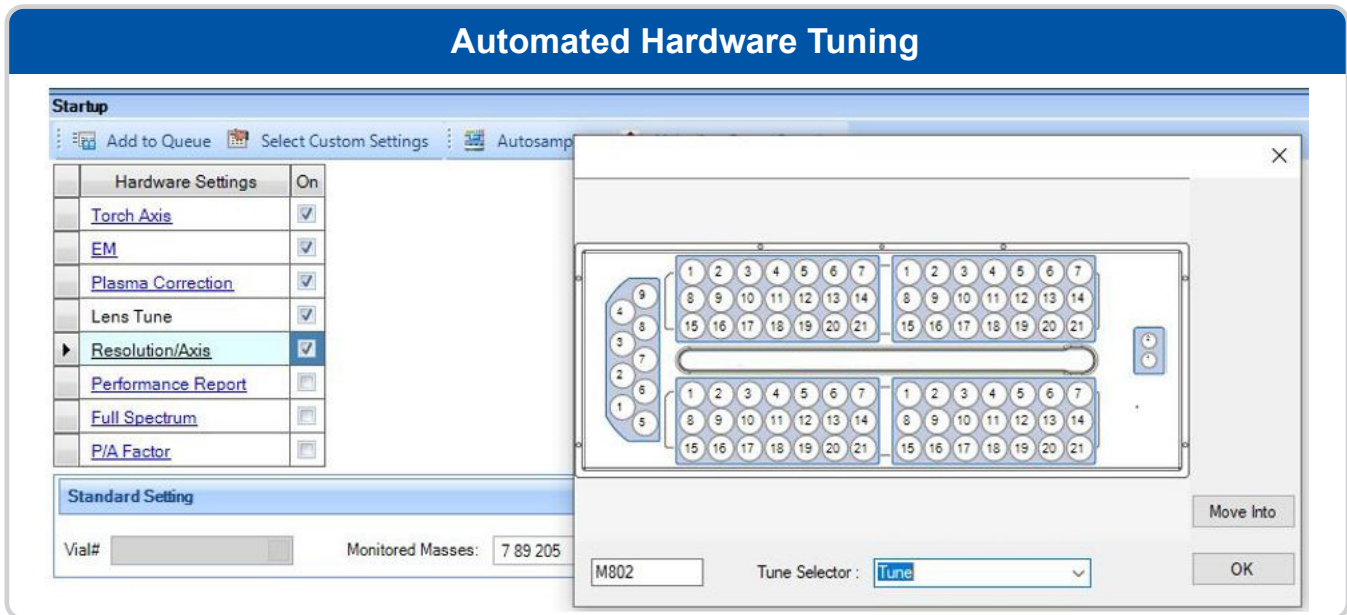
Description	Part Number
TuneSelect for Agilent prepFAST. M4 valve with stream-selection valve actuator, communication cable, probes, and bottles. Used for automated tuning and optimization of the Agilent ICPMS using ESI plugins, includes bottles for carrier, tune, P/A calibration, and optional tune solution.	TS-M4-79

TuneSelect Settings Interface



The settings window in the ESI Plugin for Agilent MassHunter where TuneSelect settings are adjusted.

Automated Hardware Tuning



Before a hardware or start-up tune begins, the TuneSelect will switch to the tune solution and wait for a prescribed uptake time. The TuneSelect valve can also be manually controlled from a drop-down autosampler interface in multiple pages of the Agilent MassHunter software to enable manual tuning, as well.