

## 2DXCi Autosampler

The DX autosampler is a durable, streamlined, integrated automation system with fully expandable hardware and software supporting inorganic and organic applications.

The 2DXCi autosampler configurations range from a basic high-performance autosampler to a complete, easy-to-use, on-line sample preparation system.

The 2DXCi is configured with two independently pumped rinse stations and a *FAST* vacuum pump, which makes it ready for upgrade to *FAST* and prep*FAST* automation systems.

### Benefits

- **Autocorrecting**
- **Durable** – Long life components for enhanced chemical resistance
- **Productive** – Improves speed and data quality
- **Flexible Software Interface**
- **Streamlined**
- **Compact**

### Dimensions and Weight

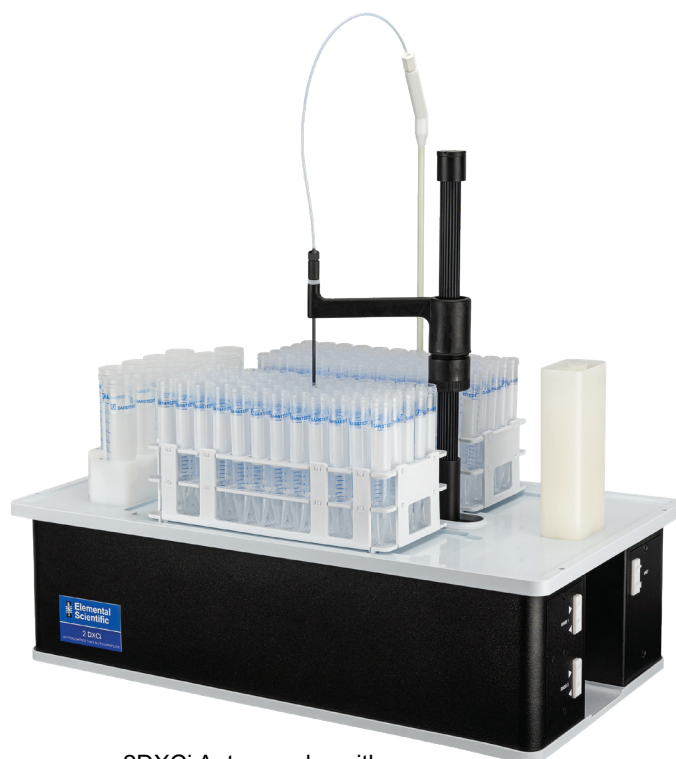
- Height: 460mm (18")
- Width: 540mm (21")
- Depth: 295mm (11.5")
- Weight: 8.2kg (18 lbs.)

### Power Requirements

- 24 V DC switching power supply, 6 A (included)
- Input power: 100-240 VAC  $\pm$  10%, 50-60 Hz, 2.8A

### Electrical Connections

- 1x USB
- 2x RS485
- 4x I/O



2DXCi Autosampler with independently pumped Dual Flowing Rinse Stations and *FAST* pump

### Configuration Options

- 2 large racks or 4 micro racks
- *FAST* injection valves
- prep*FAST* autodilution systems
- MP<sup>2</sup> micro peristaltic pumps
- Autosampler Enclosure
- Mobile Autosampler Station